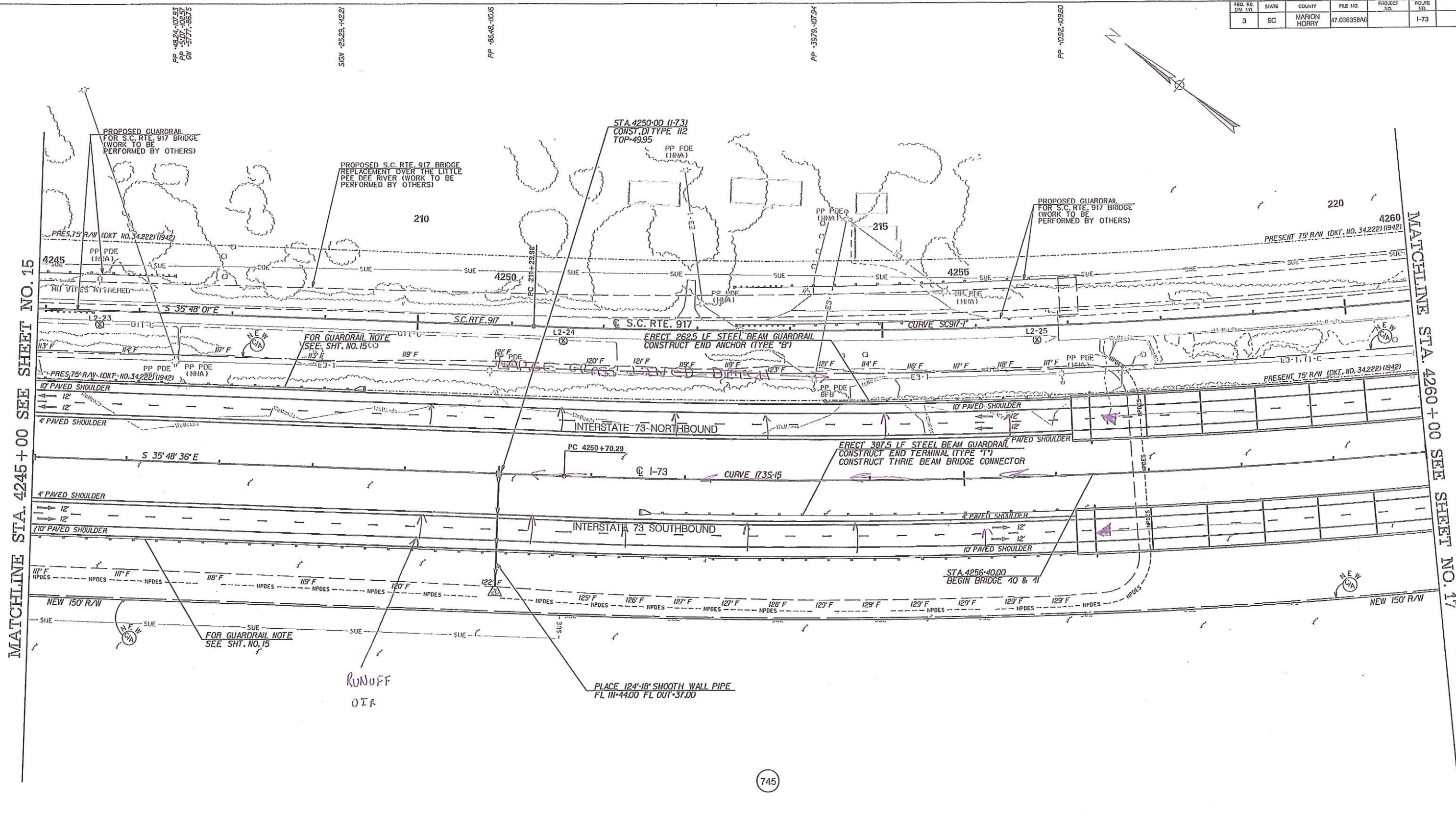
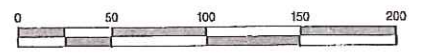


**Appendix K**  
**Red-line I-73 Permit Sheets**

FED. RD. DIST. NO.	STATE	COUNTY	FILE NO.	PROJECT NO.	ROUTE NO.	SHEET NO.
3	SC	MARION HORRY	47.036358AG		I-73	16



745



SEE SHEETS 4 AND 4A FOR PROPERTY INFORMATION. FOR I-73 PROFILE, SEE SHEET 17A.

**THE LPA GROUP**  
 TRANSPORTATION CONSULTANTS

**WilburSmith ASSOCIATES**  
 ENGINEERS PLANNERS ECONOMISTS

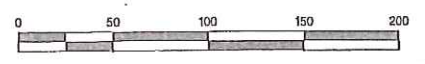
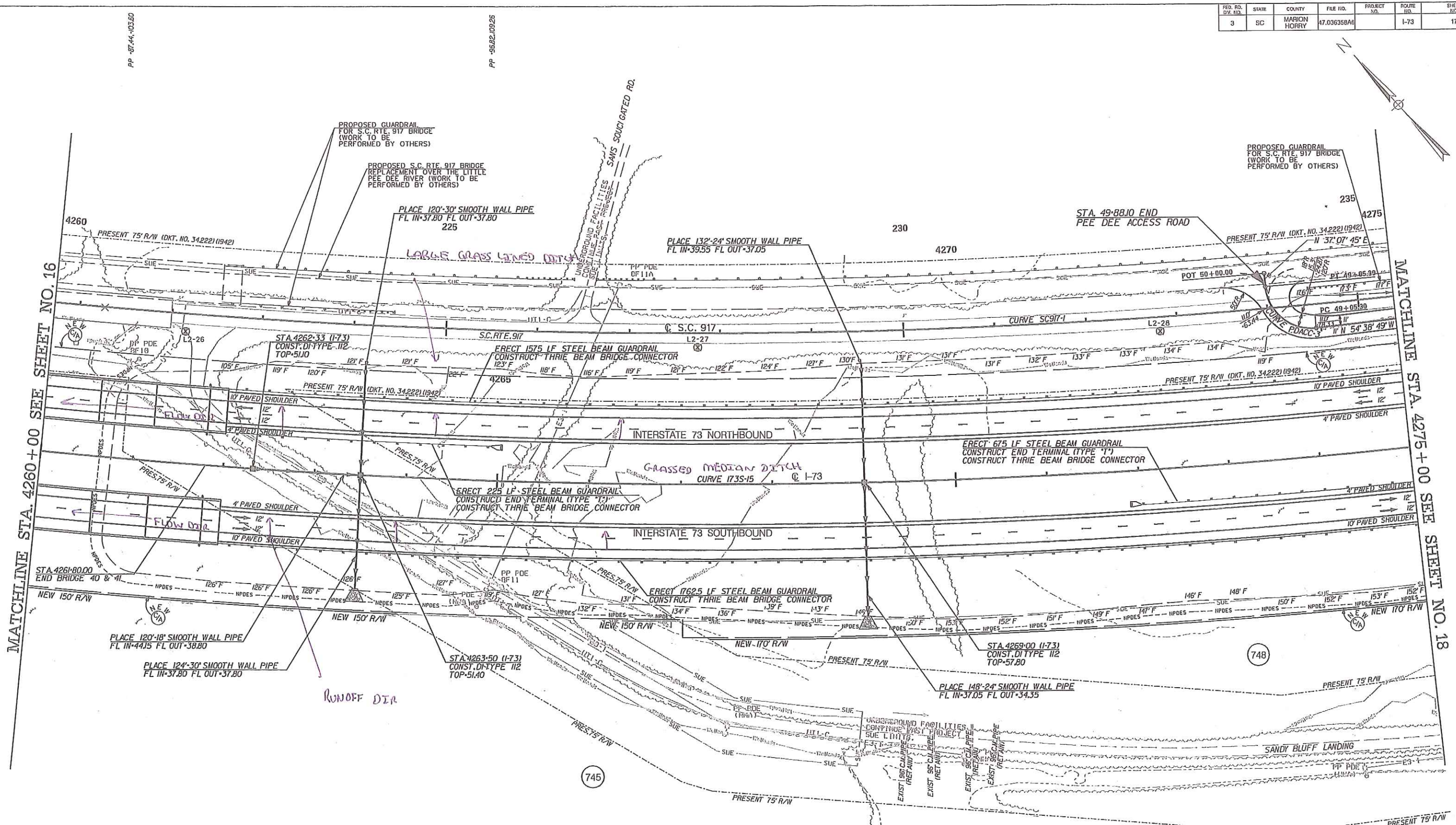
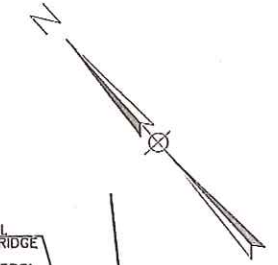
**Florence & Hutcheson, Inc.**  
 CONSULTING ENGINEERS

**HCB**  
 A Ball Company

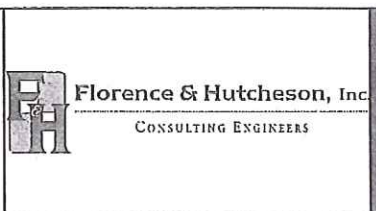
4			
3			
2			
1			
REV. NO.	BY	DATE	DESCRIPTION OF REVISION
DESIGNED BY:		DATE	
DRAWN BY:		DATE	
CHECKED BY:		DATE	

SOUTH CAROLINA DEPARTMENT OF TRANSPORTATION  
 INTERSTATE 73  
 PLAN SHEET  
 INTERSTATE 73  
 STA. 4245+00 TO STA. 4260+00  
 SHEET 16  
 SCALE: 1" = 50'

FED. RD. DIV. NO.	STATE	COUNTY	FILE NO.	PROJECT NO.	ROUTE NO.	SHEET NO.
3	SC	MARION HOBBS	47.03635BA6		I-73	17



SEE SHEETS 4 AND 4A FOR PROPERTY INFORMATION.  
FOR I-73 PROFILE, SEE SHEET 17A.



4			
3			
2			
1			
REV. NO.	BY	DATE	DESCRIPTION OF REVISION
DESIGNED BY:		DATE	
DRAWN BY:		DATE	
CHECKED BY:		DATE	

SOUTH CAROLINA DEPARTMENT OF TRANSPORTATION  
INTERSTATE 73

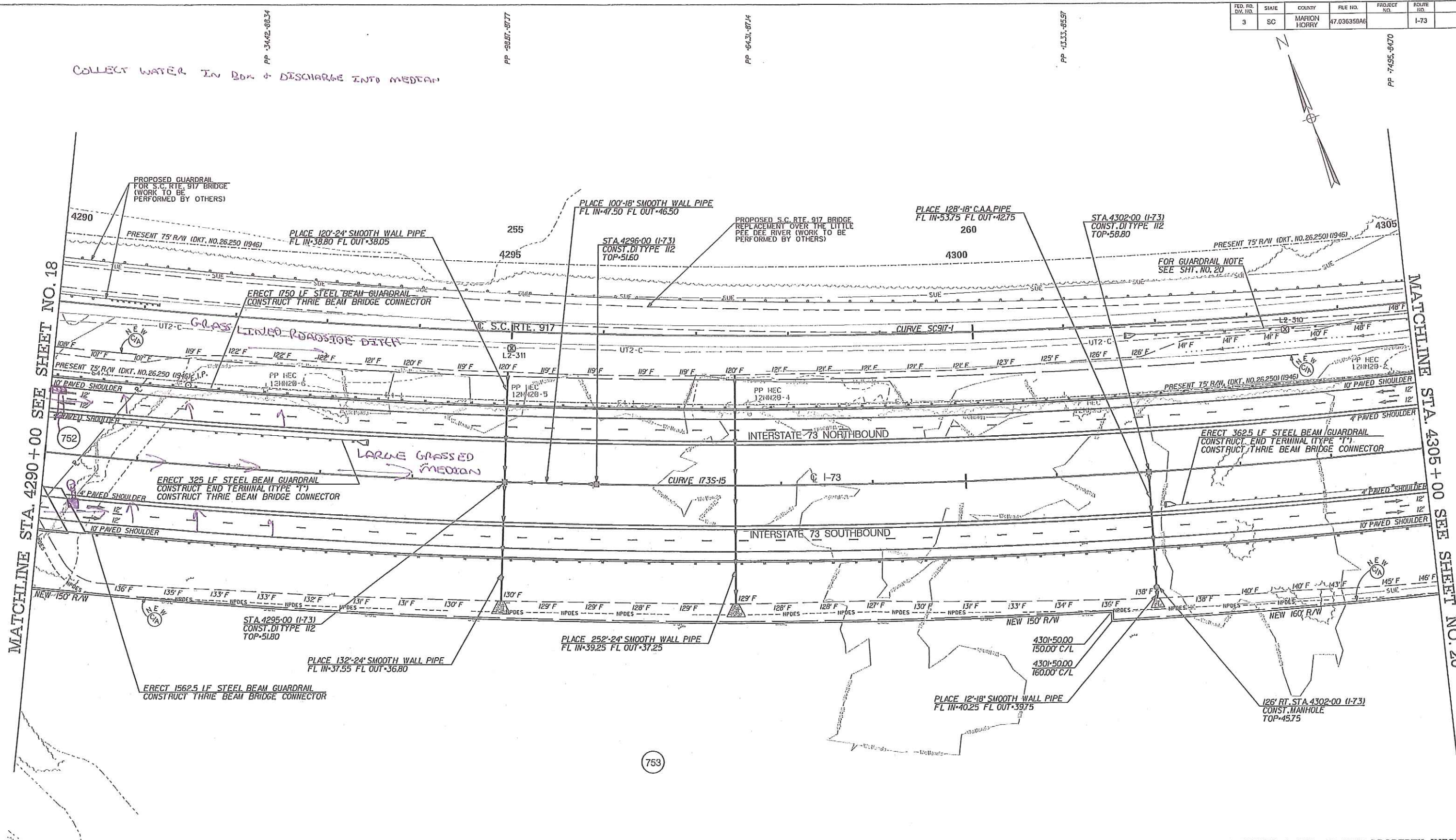
PLAN SHEET  
INTERSTATE 73  
STA. 4260+00 TO STA. 4275+00

SHEET 17 SCALE: 1" = 50'



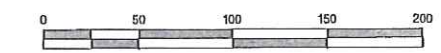
FED. RD. DIV. NO.	STATE	COUNTY	FILE NO.	PROJECT NO.	ROUTE NO.	SHEET NO.
3	SC	MARION HORRY	47.036350A6		I-73	19

COLLECT WATER IN BOX + DISCHARGE INTO MEDIAN



MATCHLINE STA. 4290+00 SEE SHEET NO. 18

MATCHLINE STA. 4305+00 SEE SHEET NO. 20



SEE SHEETS 4 AND 4A FOR PROPERTY INFORMATION. FOR I-73 PROFILE, SEE SHEET 19A.

**THE LPA GROUP**  
TRANSPORTATION CONSULTANTS

**WilburSmith ASSOCIATES**  
ENGINEERS PLANNERS ECONOMISTS

**Florence & Hutcheson, Inc.**  
CONSULTING ENGINEERS

**HGBD**  
A Ball Company

4			
3			
2			
1			
REV. NO.	BY	DATE	DESCRIPTION OF REVISION
DESIGNED BY:		DATE	1:\03170\Segment B2\Plan\SI1119.dgn
DRAWN BY:		DATE	10152009
CHECKED BY:		DATE	

SOUTH CAROLINA DEPARTMENT OF TRANSPORTATION  
INTERSTATE 73

PLAN SHEET  
INTERSTATE 73  
STA. 4290+00 TO STA. 4305+00

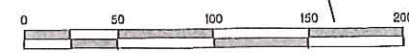
SHEET 19 SCALE: 1" = 50'

FED. NO. DIV. NO.	STATE	COUNTY	FILE NO.	PROJECT NO.	ROUTE NO.	SHEET NO.
3	SC	MARION HOBBS	47.036358A6		I-73	22

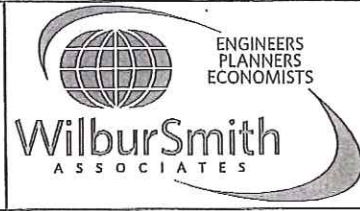
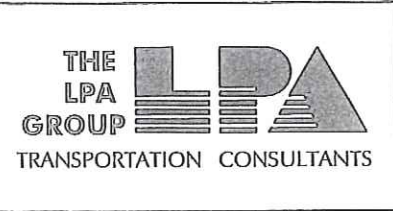
COLLECT WATER IN BOX AND DISCHARGE INTO MEDIAN

MATCHLINE STA. 4335+00 SEE SHEET NO. 21

MATCHLINE STA. 4350+00 SEE SHEET NO. 23



SEE SHEETS 4 AND 4A FOR PROPERTY INFORMATION. FOR I-73 PROFILE, SEE SHEET 23A.



4			
3			
2			
1			
REV. NO.	BY	DATE	DESCRIPTION OF REVISION
DESIGNED BY:		DATE	1081701Segment B2\Plan\SH122.dgn
DRAWN BY:		DATE	10152009
CHECKED BY:		DATE	

SOUTH CAROLINA DEPARTMENT OF TRANSPORTATION  
INTERSTATE 73

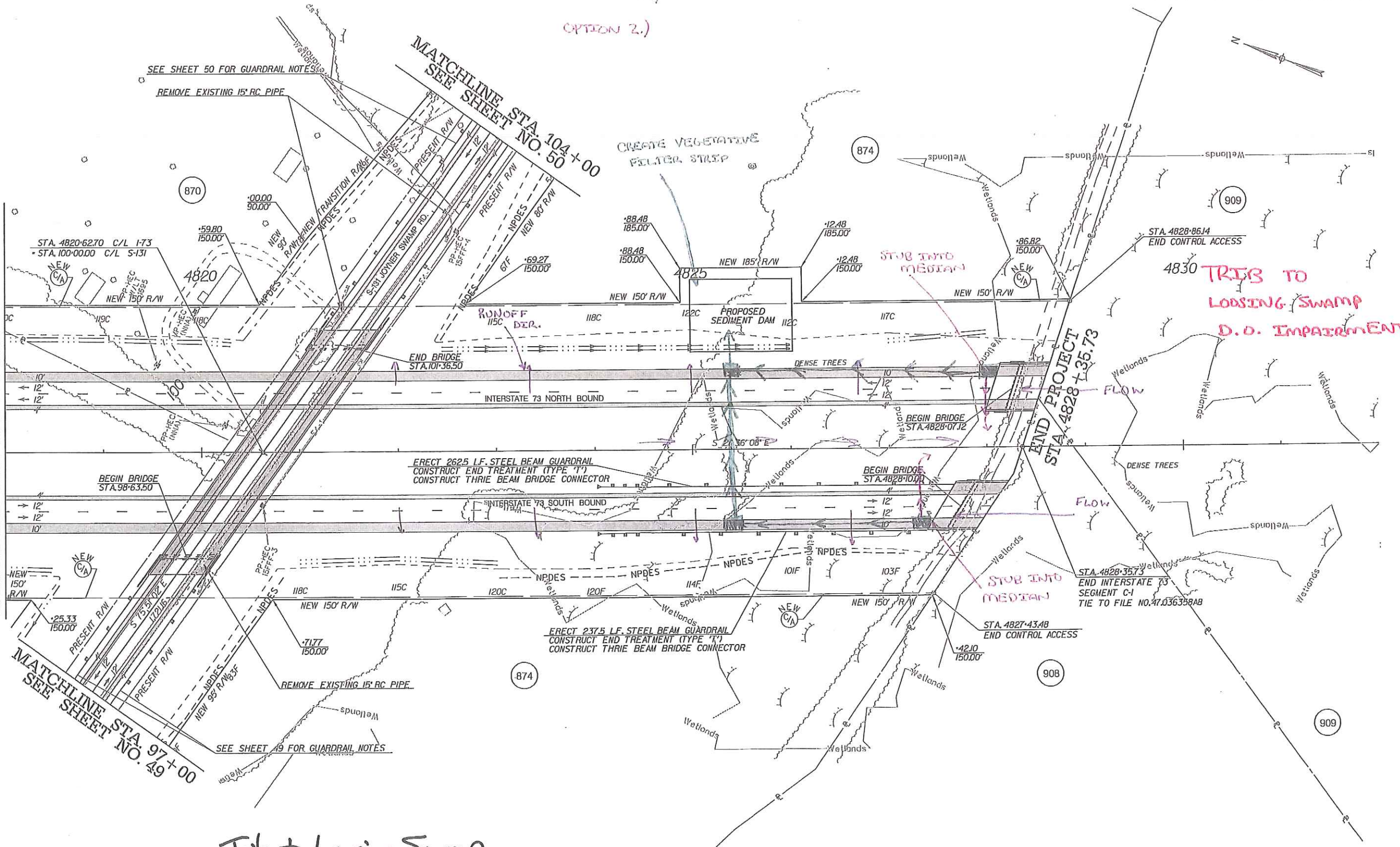
PLAN SHEET  
INTERSTATE 73  
STA. 4335+00 TO STA. 4350+00

SHEET 22 SCALE: 1" = 50'

FED. RD. DIST. NO.	STATE	COUNTY	FILE NO.	PROJECT NO.	ROUTE NO.	SHEET NO.
3	SC	HORRY	47.036358A7		I-73	35

OPTION 1.)  
OPTION 2.)

MATCHLINE STA. 4818+00 SEE SHEET NO. 34



Trib. to Loosing Swamp

SEE SHEET 4 THRU 4A FOR PROPERTY INFORMATION  
SEE SHEET 5H FOR ALIGNMENT CONTROL  
SEE SHEET 35A FOR I-73 PROFILE  
SEE SHEET 60 FOR S-131 PROFILE



4			
3			
2			
1			
REV. NO.	BY	DATE	DESCRIPTION OF REVISION
DESIGNED BY:		DATE	...
DRAWN BY:		DATE	User: ALVINGSTO11
CHECKED BY:		DATE	11/18/2009

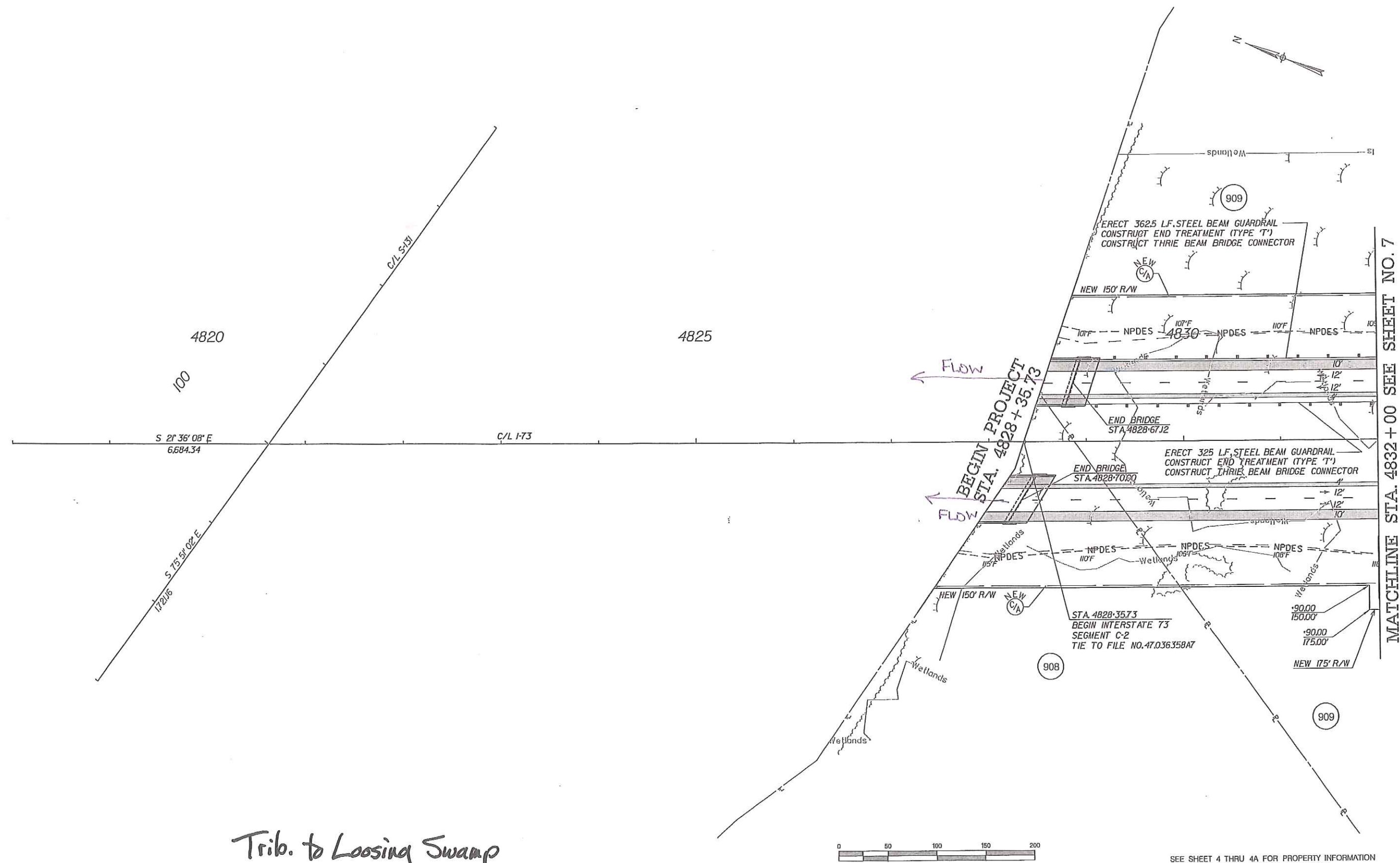
SOUTH CAROLINA DEPARTMENT OF TRANSPORTATION  
INTERSTATE 73

PLAN SHEET  
INTERSTATE 73  
STA. 4818+00 TO STA. 4828+35.73

SHEET 35 SCALE: 1" =

C:\p1\181830\_p1\181830.dwg  
 User: ALVINGSTO11  
 11/18/2009

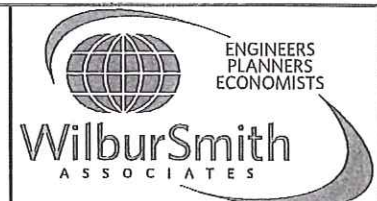
FED. RD. DIST. NO.	STATE	COUNTY	FILE NO.	PROJECT NO.	ROUTE NO.	SHEET NO.
3	SC	HORRY	47.036358A8		I-73	6



*Trib. to Loosing Swamp*

MATCHLINE STA. 4832+00 SEE SHEET NO. 7

SEE SHEET 4 THRU 4A FOR PROPERTY INFORMATION  
SEE SHEET 6A FOR ALIGNMENT CONTROL  
SEE SHEET 7A FOR I-73 PROFILE



4			
3			
2			
1			
REV. NO.	BY	DATE	DESCRIPTION OF REVISION
DESIGNED BY:		DATE	..:\plans\30_prelim\047C2_SH00.dgn
DRAWN BY:		DATE	User: ALVINGSTON
CHECKED BY:		DATE	11/18/2009

SOUTH CAROLINA DEPARTMENT OF TRANSPORTATION  
INTERSTATE 73

PLAN SHEET  
INTERSTATE 73  
STA. 4818+00 TO STA. 4832+00

SHEET 6 SCALE: 1" =

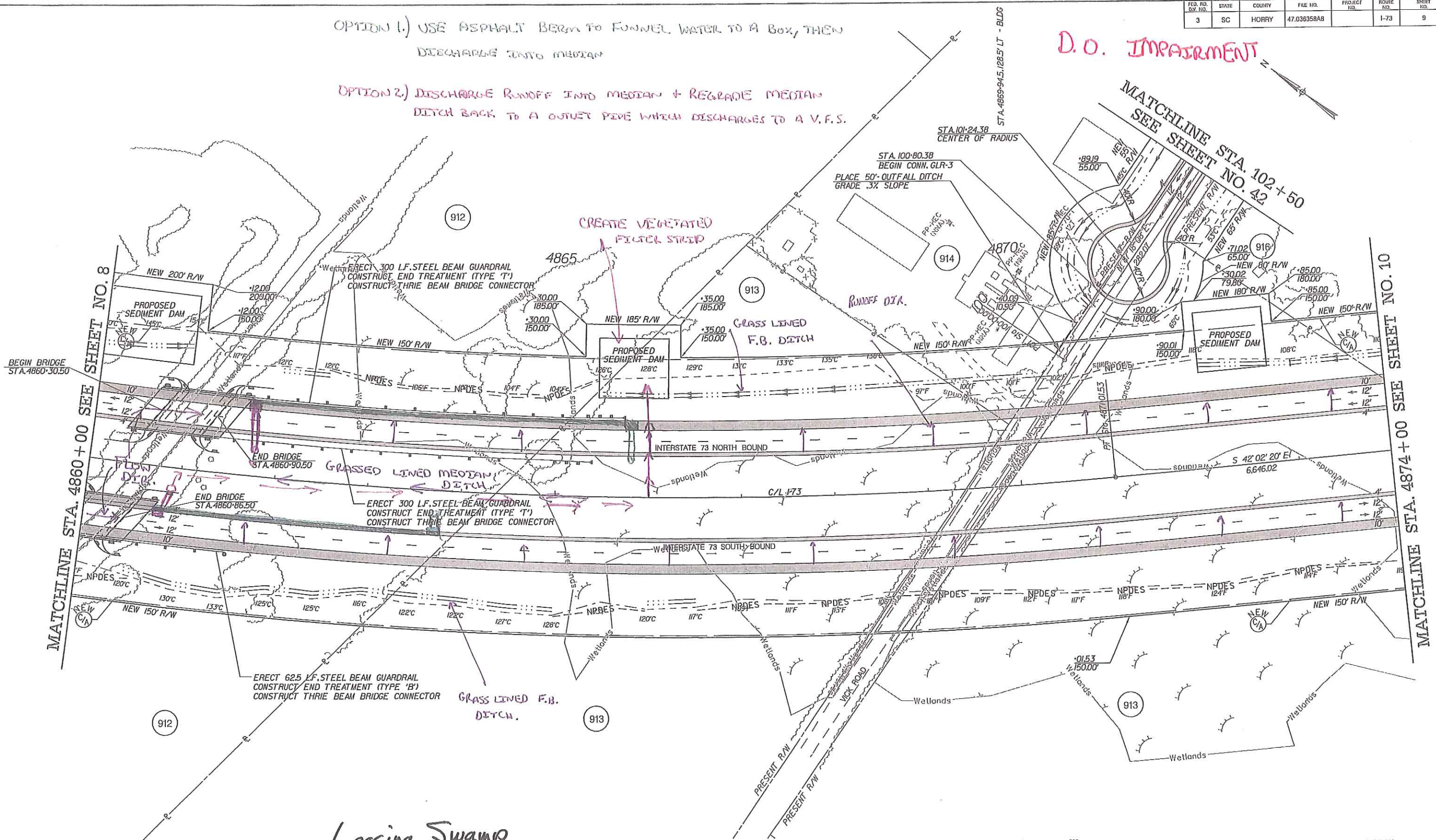
S:\projects\30\_prelim\047C2\_SH00.dgn 11/18/2009 11:18:20 AM



OPTION 1.) USE ASPHALT BERM TO FUNNEL WATER TO A BOX, THEN DISCHARGE INTO MEDIAN

OPTION 2.) DISCHARGE RUNOFF INTO MEDIAN + REGRADE MEDIAN DITCH BACK TO A OUTLET PIPE WHICH DISCHARGES TO A V.F.S.

D.O. IMPAIRMENT



Loosing Swamp



SEE SHEET 4 THRU 4A FOR PROPERTY INFORMATION  
 SEE SHEET 5B FOR ALIGNMENT CONTROL  
 SEE SHEET 9A FOR I-73 PROFILE  
 SEE SHEET 62 FOR CONN. GLR-3 PROFILE

**THE LPA GROUP**  
 TRANSPORTATION CONSULTANTS

**WilburSmith ASSOCIATES**  
 ENGINEERS PLANNERS ECONOMISTS

**Florence & Hutcheson, Inc.**  
 CONSULTING ENGINEERS

**HCB**  
 A Ball Company

REV. NO.	BY	DATE	DESCRIPTION OF REVISION
4			
3			
2			
1			

DESIGNED BY: \_\_\_\_\_ DATE \_\_\_\_\_  
 DRAWN BY: \_\_\_\_\_ DATE \_\_\_\_\_  
 CHECKED BY: \_\_\_\_\_ DATE \_\_\_\_\_

...plan\90\_prelim\047C2\_SH09.dgn  
 User: ALNINGSTON  
 11/8/2009

SOUTH CAROLINA DEPARTMENT OF TRANSPORTATION  
 INTERSTATE 73

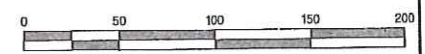
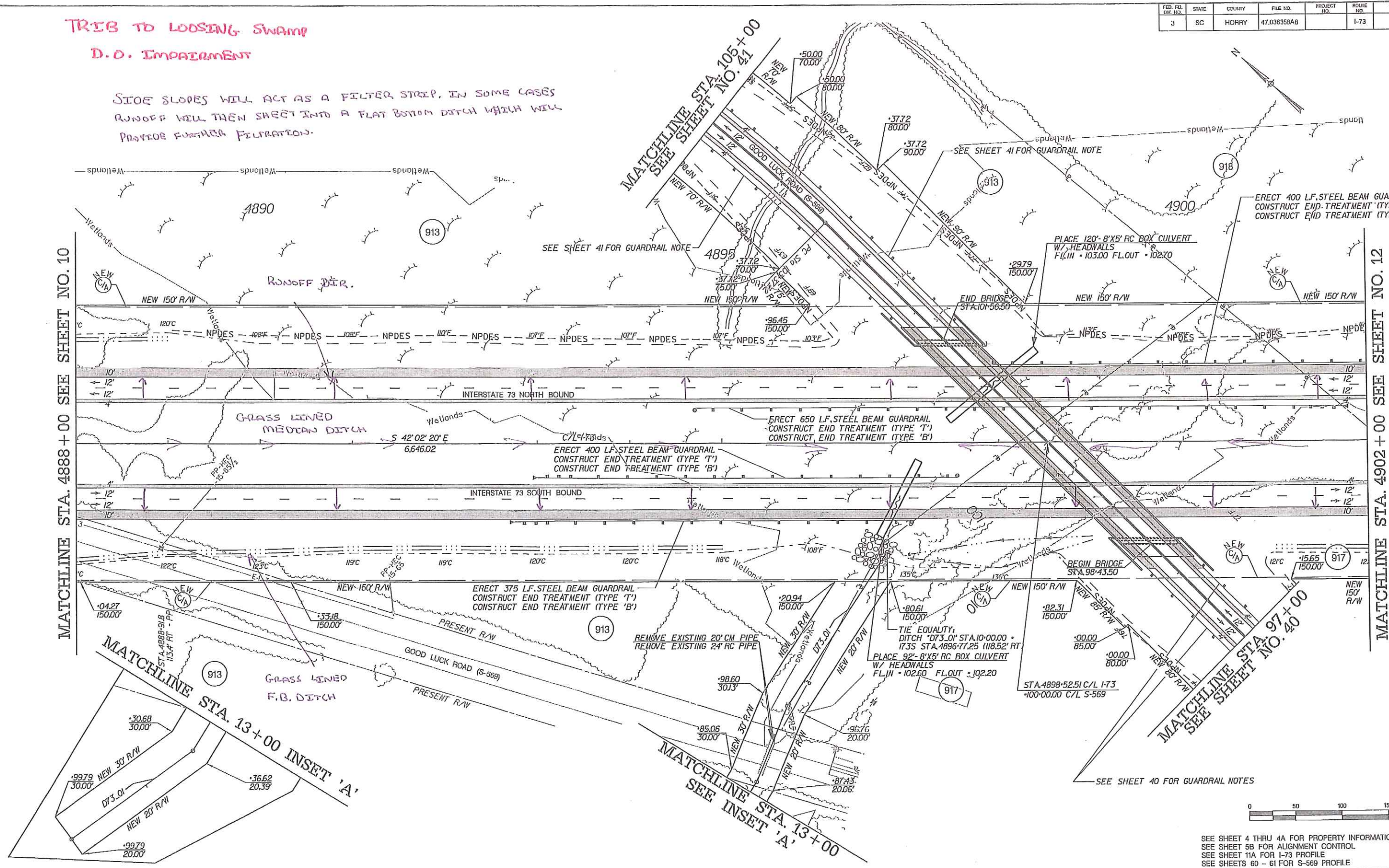
PLAN SHEET  
 INTERSTATE 73  
 STA. 4860+00 TO STA. 4874+00

SHEET 9 SCALE: 1" = \_\_\_\_\_

TRIB TO LOOSING SWAMP

D.O. IMPAIRMENT

STONE SLOPES WILL ACT AS A FILTER STRIP. IN SOME CASES RUNOFF WILL THEN SHEET INTO A FLAT BOTTOM DITCH WHICH WILL PROVIDE FURTHER FILTRATION.

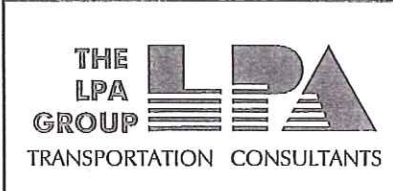


SEE SHEET 4 THRU 4A FOR PROPERTY INFORMATION  
 SEE SHEET 5B FOR ALIGNMENT CONTROL  
 SEE SHEET 11A FOR I-73 PROFILE  
 SEE SHEETS 60 - 61 FOR S-569 PROFILE

SOUTH CAROLINA DEPARTMENT OF TRANSPORTATION  
 INTERSTATE 73

PLAN SHEET  
 INTERSTATE 73  
 STA. 4888+00 TO STA. 4902+00

SHEET 11 SCALE: 1" =



REV. NO.	BY	DATE	DESCRIPTION OF REVISION
4			
3			
2			
1			

DESIGNED BY: \_\_\_\_\_ DATE \_\_\_\_\_  
 DRAWN BY: \_\_\_\_\_ DATE \_\_\_\_\_  
 CHECKED BY: \_\_\_\_\_ DATE \_\_\_\_\_

...lp10na\30\_pre\m\047C2\_SHEET.dgn  
 User: ALVINSTON  
 1/18/2009

TIMOL WATERSHED

PLACE 228'-8'X5' RC BOX CULVERT  
W/ HEADWALLS  
FL. IN = 95.70 FL. OUT = 95.20

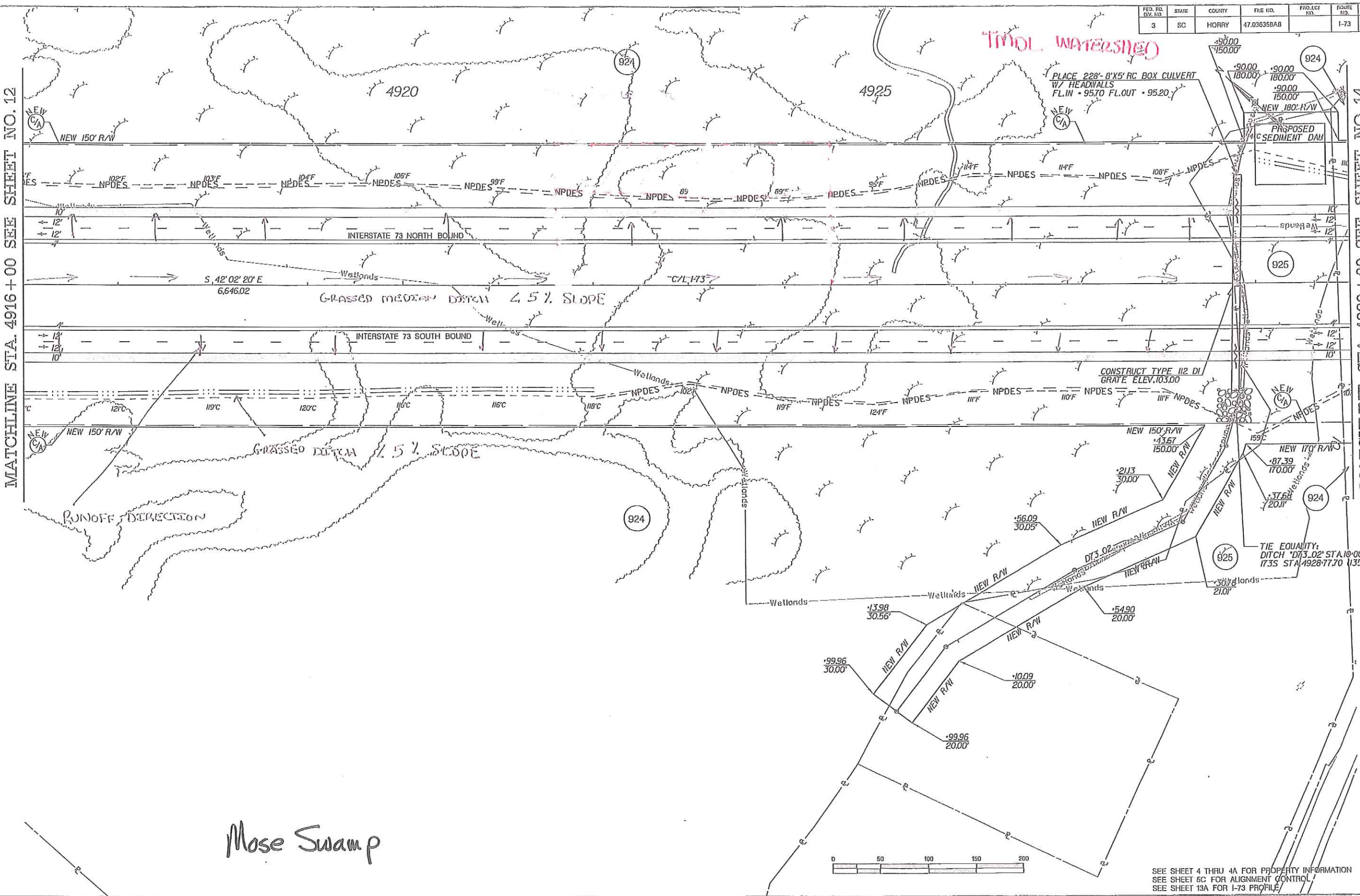
NEW 180' R/W  
PROPOSED SEDIMENT DAM

CONSTRUCT TYPE #2 DI  
GRATE ELEV. 103.00

TIE EQUALITY  
DITCH 'D73.02' STA 10+00.00 -  
1735 STA 1928+77.70 (1357.3' RT)

MATCHLINE STA. 4916+00 SEE SHEET NO. 12

MATCHLINE STA. 4930+00 SEE SHEET NO. 14



Mose Swamp

SEE SHEET 4 THRU 4A FOR PROPERTY INFORMATION  
SEE SHEET 6C FOR ALIGNMENT CONTROL  
SEE SHEET 13A FOR I-73 PROFILE

**THE LPA GROUP**  
TRANSPORTATION CONSULTANTS

**WilburSmith ASSOCIATES**  
ENGINEERS PLANNERS ECONOMISTS

**Florence & Hutcheson, Inc.**  
CONSULTING ENGINEERS

**HGBD**  
A Bell Company

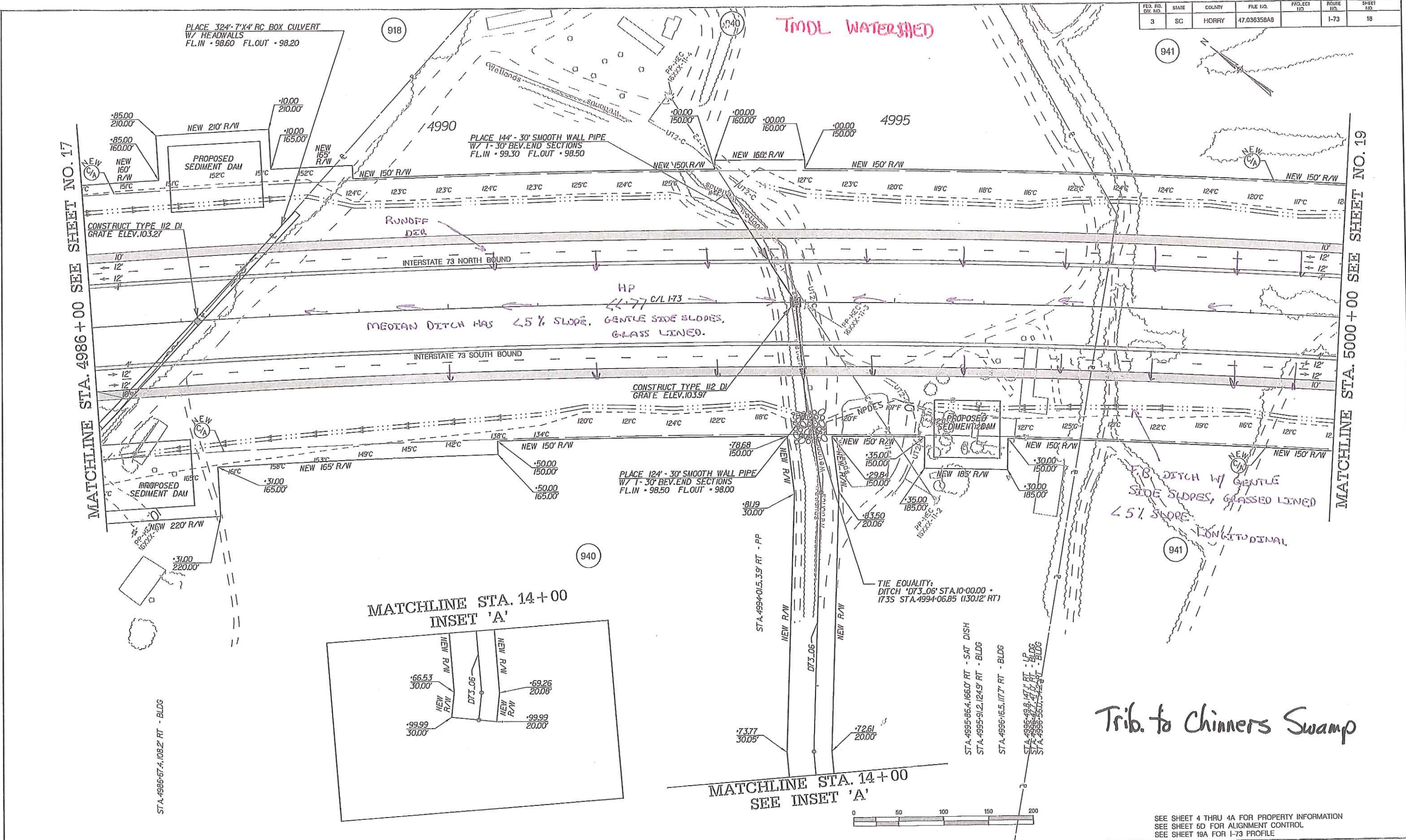
4			
3			
2			
1			
REV. NO.	BY	DATE	DESCRIPTION OF REVISION
DESIGNED BY:		DATE	
DRAWN BY:		DATE	...plans\30_pretm\047C2_S113.dgn User: ALVINGSTO1 11/10/2009
CHECKED BY:		DATE	

SOUTH CAROLINA DEPARTMENT OF TRANSPORTATION  
INTERSTATE 73

PLAN SHEET  
INTERSTATE 73  
STA. 4916+00 TO STA. 4930+00

SHEET 13 SCALE: 1" =

FED. RD. DIST. NO.	STATE	COUNTY	FILE NO.	PROJECT ID	ROUTE NO.	SHEET NO.
3	SC	HORRY	47.036358A0		I-73	18



Trib. to Chinnners Swamp

SEE SHEET 4 THRU 4A FOR PROPERTY INFORMATION  
 SEE SHEET 5D FOR ALIGNMENT CONTROL  
 SEE SHEET 19A FOR I-73 PROFILE



REV. NO.	BY	DATE	DESCRIPTION OF REVISION
4			
3			
2			
1			

DESIGNED BY: \_\_\_\_\_ DATE \_\_\_\_\_  
 DRAWN BY: \_\_\_\_\_ DATE \_\_\_\_\_  
 CHECKED BY: \_\_\_\_\_ DATE \_\_\_\_\_

...plans\30\_prelim\047C2\_SH18.dwg  
 User: ALANNGSTON  
 11/8/2009

SOUTH CAROLINA DEPARTMENT OF TRANSPORTATION  
 INTERSTATE 73

PLAN SHEET  
 INTERSTATE 73  
 STA. 4986+00 TO STA. 5000+00

SHEET 18 SCALE: 1" = \_\_\_\_\_

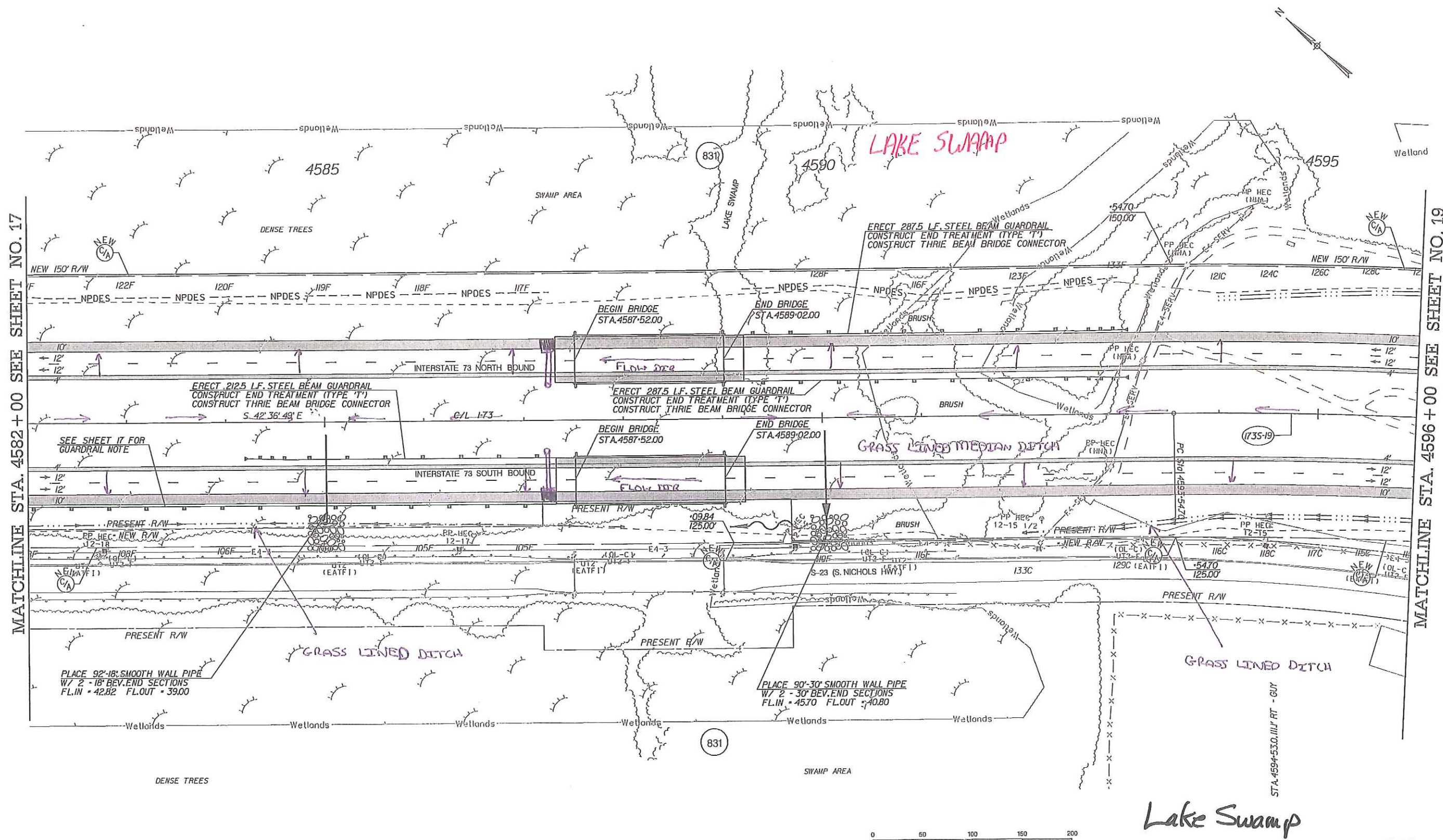






FED. RD. DIV. NO.	STATE	COUNTY	FILE NO.	PROJECT NO.	ROUTE NO.	SHEET NO.
3	SC	HORRY	47.036350A7		I-73	18

COLLECT RUNOFF IN A BOX & DISCHARGE INTO MEDIAN DITCH



MATCHLINE STA. 4582+00 SEE SHEET NO. 17

MATCHLINE STA. 4596+00 SEE SHEET NO. 19

Lake Swamp

SEE SHEET 4 THRU 4A FOR PROPERTY INFORMATION  
SEE SHEET 5D FOR ALIGNMENT CONTROL  
SEE SHEET 19A FOR I-73 PROFILE



4			
3			
2			
1			
REV. NO.	BY	DATE	DESCRIPTION OF REVISION
DESIGNED BY:		DATE	
DRAWN BY:		DATE	
CHECKED BY:		DATE	

SOUTH CAROLINA DEPARTMENT OF TRANSPORTATION  
INTERSTATE 73

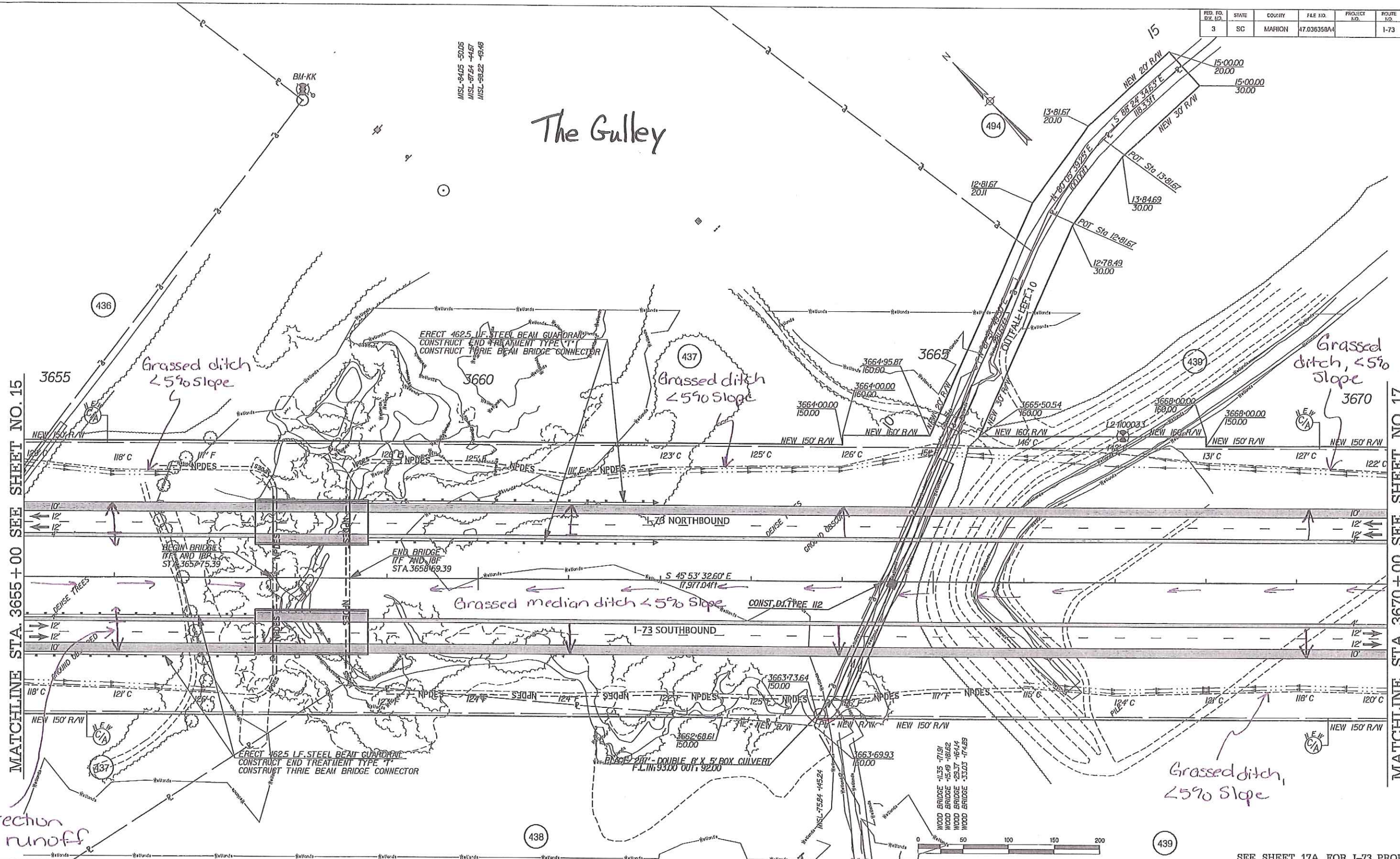
PLAN SHEET  
INTERSTATE 73  
STA. 4582+00 TO STA. 4596+00

SHEET 18 SCALE: 1" =



FED. RD. DIST. NO.	STATE	COUNTY	FILE NO.	PROJECT NO.	ROUTE	SHEET NO.
3	SC	MAHON	47.036358A		I-73	16

The Gulley

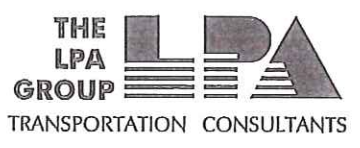


MATCHLINE STA. 3655+00 SEE SHEET NO. 15

MATCHLINE STA. 3670+00 SEE SHEET NO. 17

Direction of runoff

SEE SHEET 17A FOR I-73 PROFILE



4			
3			
2			
1			
REV. NO.	BY	DATE	DESCRIPTION OF REVISION
DESIGNED BY:		DATE	
DRAWN BY:		DATE	
CHECKED BY:		DATE	

SOUTH CAROLINA DEPARTMENT OF TRANSPORTATION  
INTERSTATE 73

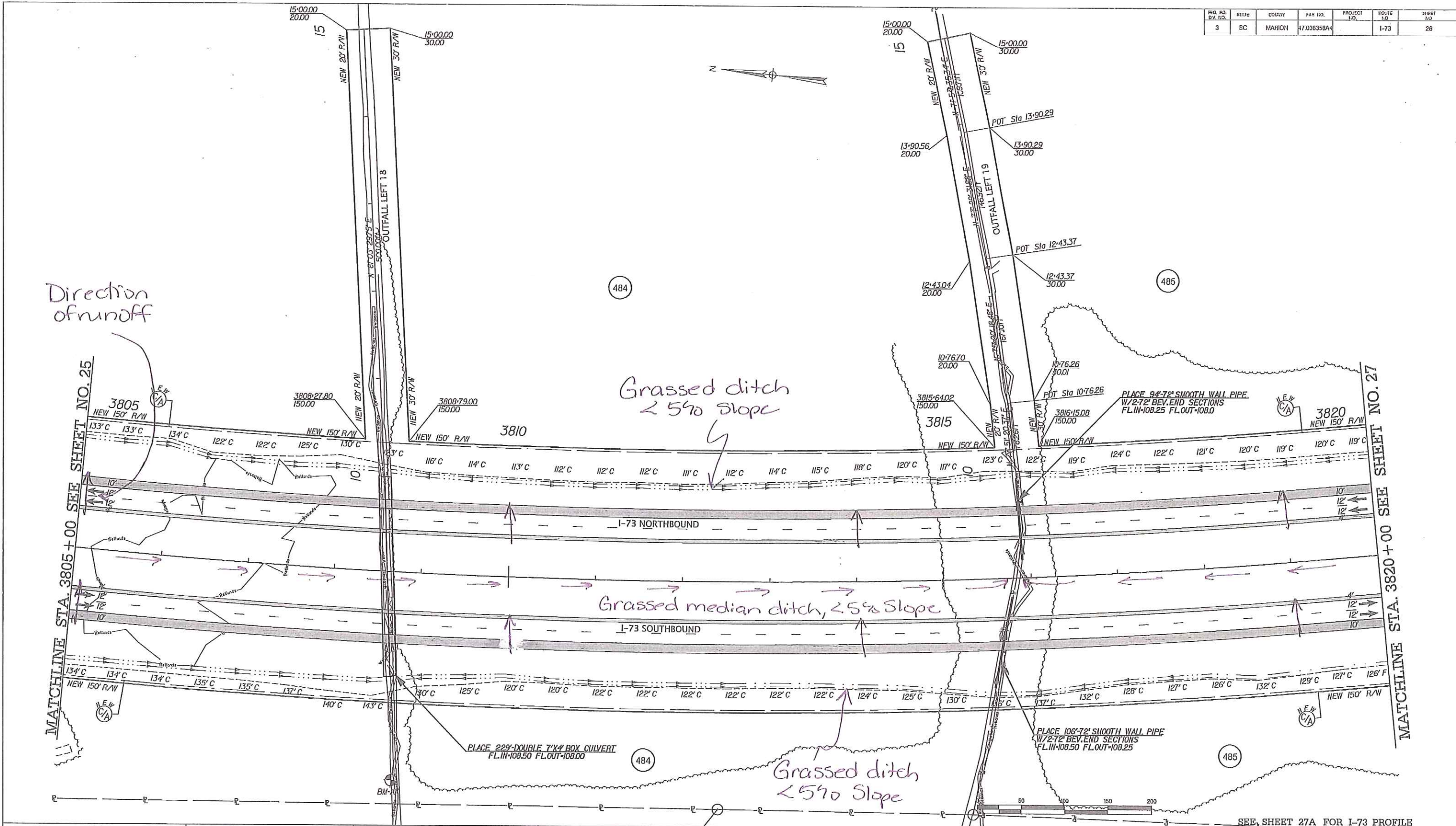
PLAN SHEET  
INTERSTATE 73  
STA. 3655+00 TO STA. 3670+00

SHEET 16 SCALE: 1" = 50'





FED. RD. DIST.	STATE	COUNTY	FILE NO.	PROJECT NO.	SHEET NO.	TOTAL SHEETS
3	SC	MARION	47.03635BA	I-73	26	26



**THE LPA GROUP**  
TRANSPORTATION CONSULTANTS

**WilburSmith ASSOCIATES**  
ENGINEERS PLANNERS ECONOMISTS

**FH Florence & Hutcheson, Inc.**  
CONSULTING ENGINEERS

**HCB**  
A Bell Company

4			
3			
2			
1			
REV. NO.	BY	DATE	DESCRIPTION OF REVISION
DESIGNED BY:		DATE	
DRAWN BY:		DATE	
CHECKED BY:		DATE	

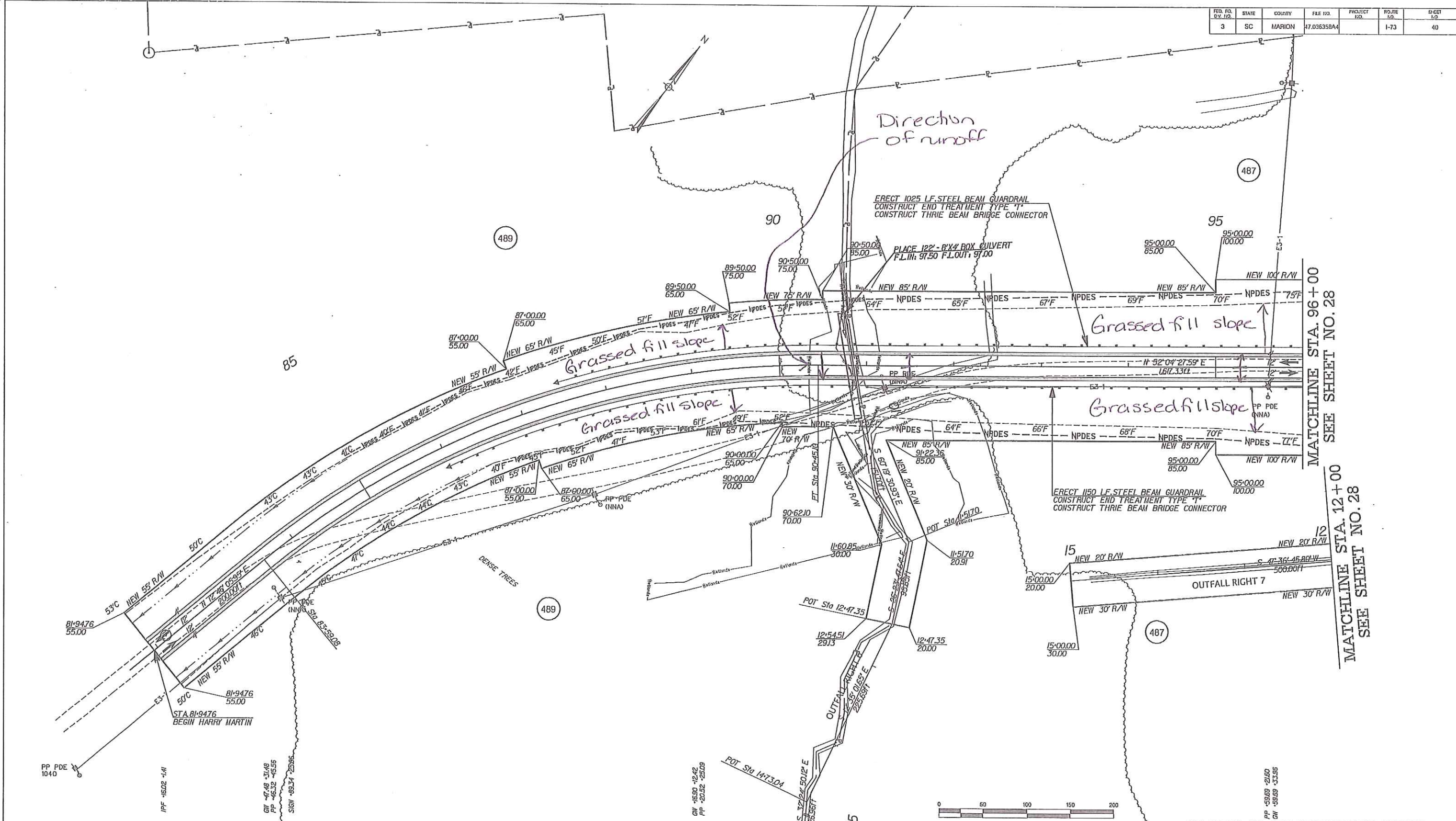
SEE SHEET 27A FOR I-73 PROFILE

**SOUTH CAROLINA DEPARTMENT OF TRANSPORTATION**  
INTERSTATE 73

PLAN SHEET  
INTERSTATE 73  
STA. 3805+00 TO STA. 3820+00

SHEET 26 SCALE: 1" = 50'

FED. RD. DIST. NO.	STATE	COUNTY	FILE NO.	PROJECT NO.	ROUTE NO.	SHEET NO.
3	SC	MARION	47.036358A4		I-73	40



MATCHLINE STA. 96+00  
SEE SHEET NO. 28

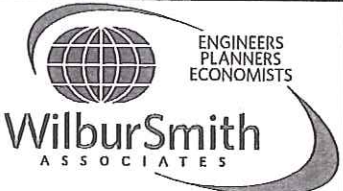
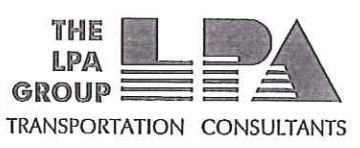
MATCHLINE STA. 12+00  
SEE SHEET NO. 28

SEE SHEET 40A FOR HARRY MARTIN PROFILE

SOUTH CAROLINA DEPARTMENT OF TRANSPORTATION  
INTERSTATE 73

PLAN SHEET  
HARRY MARTIN ROAD  
STA. 81+94.76 TO STA. 96+00

SHEET 40 SCALE: 1" = 50'

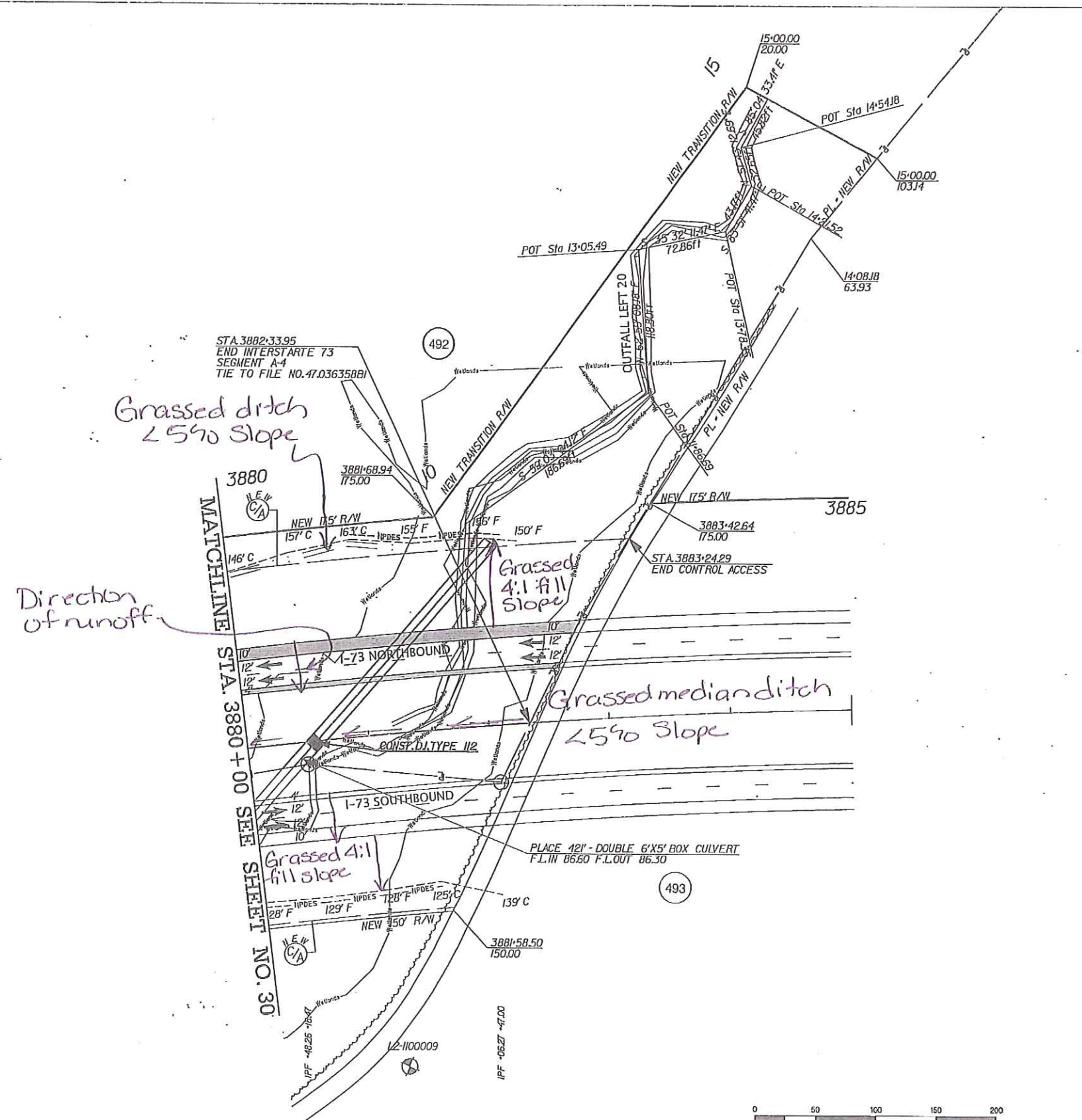


4			
3			
2			
1			
REV. NO.	BY	DATE	DESCRIPTION OF REVISION
DESIGNED BY:		DATE	
DRAWN BY:		DATE	
CHECKED BY:		DATE	

03-DEC-2009 12:14



FED. RD. DIST.	STATE	COUNTY	FILE NO.	PROJECT I.D.	ROUTE I.D.	SHEET I.D.
3	SC	MARION	47.036358A4		I-73	31

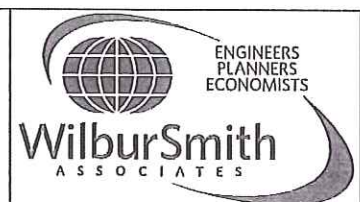


SEE SHEET 31A FOR I-73 PROFILE

SOUTH CAROLINA DEPARTMENT OF TRANSPORTATION  
INTERSTATE 73

PLAN SHEET  
INTERSTATE 73  
STA. 3880+00 TO STA. 3882+33.95

SHEET 31 SCALE: 1" = 50'

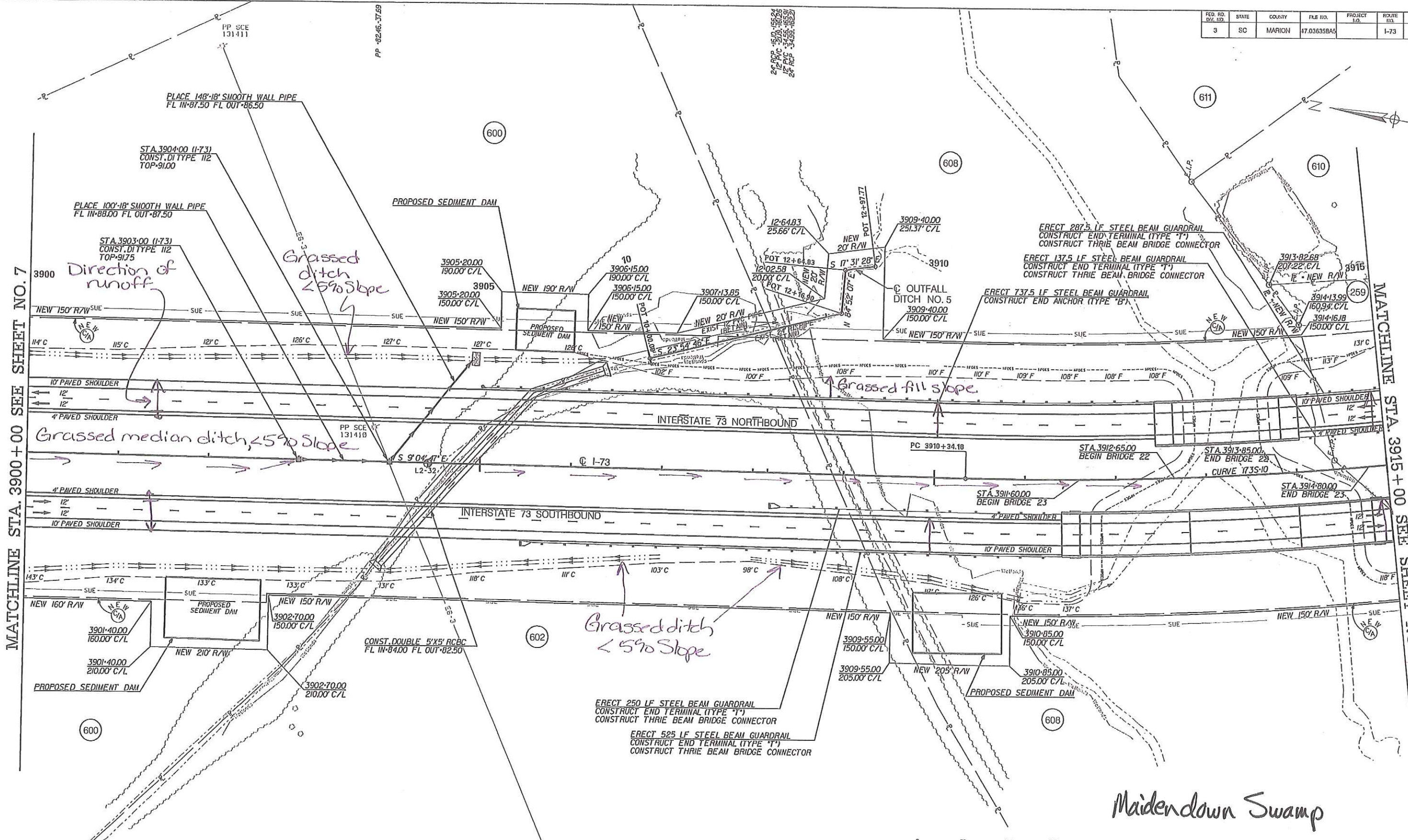


4				
3				
2				
1				
REV. NO.	BY	DATE	DESCRIPTION OF REVISION	
DESIGNED BY:		DATE	R:\Drawings\I73\ROW\SEGMENTS\SEGMENTS\SHEET31.dwg	
DRAWN BY:		DATE	DJM/insc	
CHECKED BY:		DATE	03-DEC-2009 12:12	





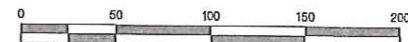
FED. RD. DIST. NO.	STATE	COUNTY	FILE NO.	PROJECT NO.	ROUTE NO.	SHEET NO.
3	SC	MARION	17.03635BA5		I-73	8



MATCHLINE STA. 3900+00 SEE SHEET NO. 7

MATCHLINE STA. 3915+00 SEE SHEET NO. 9

Maiden down Swamp



SEE SHEETS 4 AND 4A FOR PROPERTY INFORMATION.  
FOR I-73 PROFILE, SEE SHEET 9A.

**THE LPA GROUP**  
TRANSPORTATION CONSULTANTS

**WilburSmith ASSOCIATES**  
ENGINEERS PLANNERS ECONOMISTS

**Florence & Hutcheson, Inc.**  
CONSULTING ENGINEERS

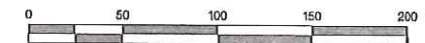
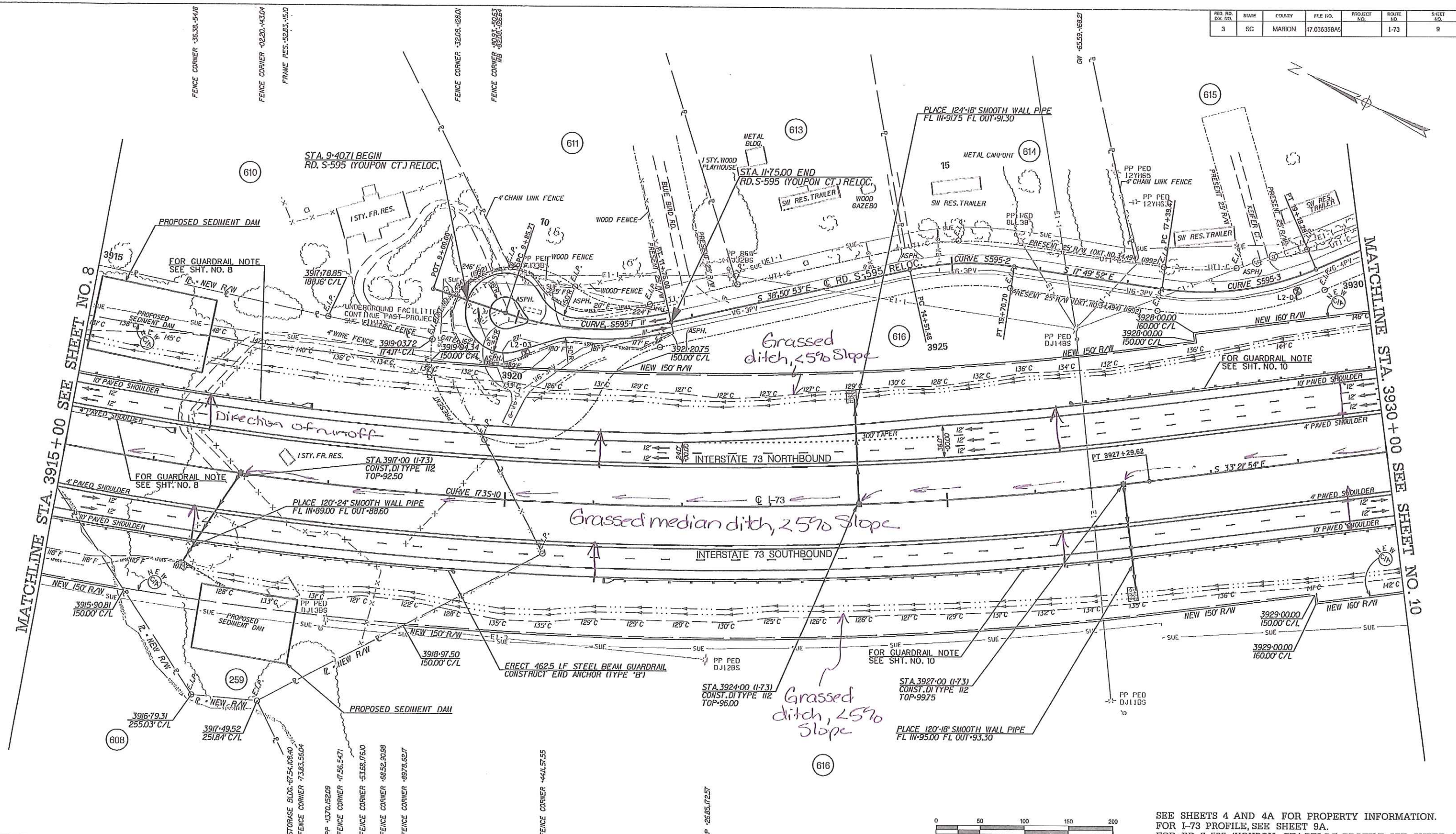
**HBD**  
A Bell Company

4			
3			
2			
1			
REV. NO.	BY	DATE	DESCRIPTION OF REVISION
DESIGNED BY:		DATE	1/03/17/Segment B1/Plan/SHT08.dgn
DRAWN BY:		DATE	
CHECKED BY:		DATE	10/5/2003

SOUTH CAROLINA DEPARTMENT OF TRANSPORTATION  
INTERSTATE 73

PLAN SHEET  
INTERSTATE 73  
STA. 3900+00 TO STA. 3915+00

SHEET 8 SCALE: 1" = 50'



SEE SHEETS 4 AND 4A FOR PROPERTY INFORMATION.  
 FOR I-73 PROFILE, SEE SHEET 9A.  
 FOR RD. S-595 (YOUPON CT.) RELOC. PROFILE, SEE SHEET 40.

**THE LPA GROUP**  
 TRANSPORTATION CONSULTANTS

**WilburSmith ASSOCIATES**  
 ENGINEERS PLANNERS ECONOMISTS

**Florence & Hutcheson, Inc.**  
 CONSULTING ENGINEERS

**HGBD**  
 A Bell Company

4			
3			
2			
1			
REV. NO.	BY	DATE	DESCRIPTION OF REVISION
DESIGNED BY:		DATE	(108170)Segment 91(Plan)SHT09.dgn
DRAWN BY:		DATE	10/15/2009
CHECKED BY:		DATE	

SOUTH CAROLINA DEPARTMENT OF TRANSPORTATION  
 INTERSTATE 73

PLAN SHEET  
 INTERSTATE 73  
 STA. 3915+00 TO STA. 3930+00

SHEET 9 SCALE: 1" = 50'